

SPECTROWHIRL TAROT

MEANINGS AND METHODS

Painted and written by
Benjamin Allan Simon

Welcome to Spectrowhirl Tarot, a kaleidoscopic collision of light, color, and whimsy. Every card is hand-painted on canvas with vibrant acrylics, creating 78 unique rainbow works of art. The Spectrowhirl Tarot Deck provides an entirely immersive reading experience to give you peace, joy and a brief venture through the cosmic spectrum.

While Spectrowhirl Tarot can function like any traditional 78-card deck for divination, it can also be used as a set of ideas for personal reflection—a metaphorical and artistic toolkit to help you examine your own life critically and creatively. The cards don't necessarily speak for your life or predict your future, but they can help illuminate the human condition, highlight the colors of the cosmos, and encourage you to look deeper into the facets of your hopes and dreams.

For examples on how to use the deck as a practical means for introspection, try these methods. (Art taken from the first edition of the Spectrowhirl Tarot deck)

Spreads for Metaphorical Reflection

Daily One Card Spread

At the start of the day, try shuffling the Spectrowhirl Tarot deck and seeing what card you get. Consider using this card to frame your day in a fresh and meditative way. Where you otherwise may have gone about your business as usual, Spectrowhirl Tarot can help you view your day through a unique lens, appreciate colors you may have missed, and approach challenges with a fresh and imaginative mindset.



For example, if you drew the Two of Coins one morning, this could be an opportunity to consider areas where you are juggling multiple responsibilities. How are you being expected to multitask? How are you handling it? Is this juggling act effortless and rewarding, or increasingly difficult? What does this mean about you and your abilities? Are there tasks you can drop or hand off to others? Today is a perfect day to analyze these questions.

Divination Spreads

Past, Present, Future

For a simple Spectrowhirl Tarot spread, shuffle the deck and lay out three cards face down in a line. The first card represents your past, the second your present, and the third your future. Here's an example:



Past: **Ace of Wands Reversed.** You've been hindered by doubts and bad circumstances, unable to work toward your goals. Think of this as the foundation that made you who you are, not a history of regret. Don't let the negativity and frustration of the past hold you back from the present.

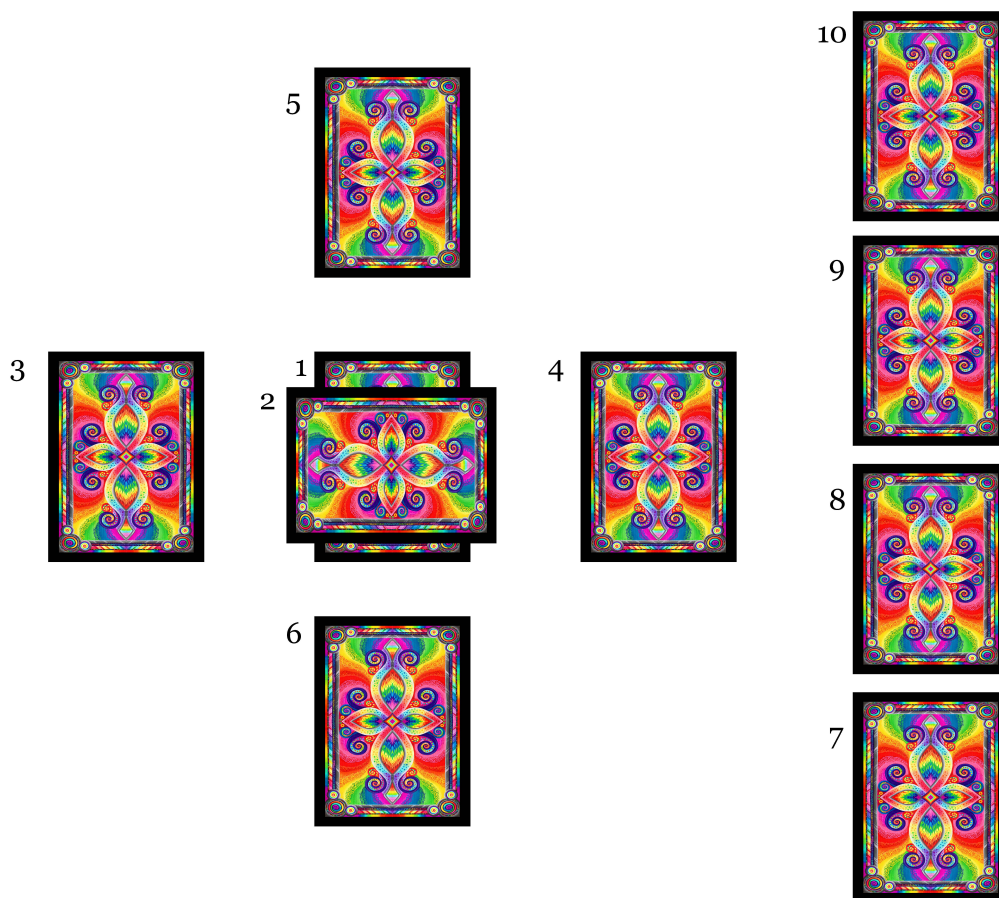
Present: **Seven of Cups.** You now have overcome obstacles but have an excess of opportunities before you and you aren't sure which path to take. But don't be overwhelmed by the choices. Having so many options is a blessing and it allows you to author your own future.

Future: **Strength.** With courage and fortitude, you can succeed in whatever you choose to achieve. Rely on your positive attributes to guide you. The power is already within you. As long as you design the outcome you want and adjust your expectations, your own strength will help you reach happiness and fulfillment.

Celtic Cross Spread

This is one of the most famous spreads in the history of tarot and is also one of the most complex to read. The arrangement consists of a six-card cross and a pillar of four cards to the right. This spread is designed to provoke ideas about how to get closest to the desired result based on what the questioner is feeling, fearing, hoping, doing, or willing to do.

To perform a Celtic Cross Spread, focus on the question being presented, whether it's a challenge, an uncertainty, or simply a glimpse into one aspect of the questioner's life. Then place the cards face down in the following order and positions:



Now uncover each card one at a time in the order shown.

- 1. The Present:** This card represents the current state of the questioner's life, especially pertaining to the inquiry. How does this particular card reflect the questioner's surroundings, emotional and mental state, or how they imagine the situation?
- 2. The Challenge:** This card shows what stands in the way of the questioner's goals, hence why the card is literally pressing down on the "Present" card. What obstacles or difficulties have arisen? What antagonistic elements must the questioner overcome to find success, or at least steer the situation toward a favorable outcome?

3. **The Past:** This card sits at the front of the spread, indicating prior events that led to the present situation. How does this card inform the questioner's current state and what lessons can be learned from forgotten moments or realities long passed?
4. **The Future:** This card sits at the right end of the cross, indicating events yet to come. This is not necessarily a forecast of exactly how the situation will turn out, but rather an examination of what might happen if things continue on the current path, how the questioner perceives the future, or how the questioner may be able to adapt in a way that will yield the best result. How can this card be interpreted to help the questioner get at least one step closer to their desires?
5. **The Conscious Mind:** This position at the top of the cross represents the conscious choices the questioner is making, or the active mental state that informs their decisions. Are they trying their hardest and failing due to outside influences? Are they on the right course but feel uncertainty despite their best efforts? What options are available to the questioner based on the actions and motives they're currently taking?
6. **The Unconscious Mind:** This card at the bottom of the cross shows the hidden truths that lie beneath the surface. What deep fears have provoked this inquiry? What unknown emotional factors influence the questioner's behavior? What aspects could affect the outcome that the questioner hasn't even considered? How can this card illuminate parts of the self that lie in disguise?
7. **Potential:** The pillar represents the actions that can or will be taken to change the course of the situation. The bottom of the pillar, position seven, represents the potential options available to the questioner that they can evaluate or use to achieve their goals. Even if they felt powerless going into this reading, every individual has some agency they can exercise over their fate to the best of their ability. How can this card help the questioner to identify the tools at their disposal?
8. **Outer Influence:** This card represents the factors outside the questioner's control. This could be the people in the questioner's life who are helping or hurting, elements of random chance, or even natural occurrences. How can these external difficulties be ignored or overcome? Are they truly in the way of the questioner's goal or just a distraction?
9. **Hopes and Fears:** This card could indicate what the questioner fears most, such as the worst possible outcome or the strongest antagonistic force in their life, but it could also represent the path they most desire. How might this card reveal to the questioner what they *expect* to happen? Are they convinced the outcome will be disastrous? Are they imagining a pragmatic result? Or do they hope for a beautiful future and truly believe they can achieve it? How can the rest of the spread help them to get closer to the hopes and further from the fears?
10. **The Outcome:** What is most likely to happen? How can the questioner integrate the potential power they hold, overcome outside obstacles, and perceive the situation in a healthy way? This card does not guarantee a result or predict the questioner's exact future, rather it helps to stimulate ideas and imagine the outcome based on the current information.

The Cards and What They Mean

The Fool:

The Fool springs into view with an unshakable expression of glee, surrounded by the glittering hues of a gorgeous new world. Start new journeys fearlessly, with kindness and excitement. Try to capture that feeling of innocence and optimism and bring it with you wherever you go. If you work toward the best possible outcome, you'll at least come close to it, and there are always beautiful colors to see along the way.

Reversed:

You might be heading into a new adventure too recklessly or without planning ahead. It's good to approach new tasks bravely, but be careful not to let brash naivety guide you. The road ahead may be treacherous, so balance optimism with pragmatism.



The Magician:

All of the powerful tools that command the natural world come together to light the spark of change. You have exactly what you need to accomplish your goals. Use the gifts you were given and the items at your disposal to gain control of your own reality. The power is already within you, you just have to summon it. Imagine what splendid magic you can conjure with so many colors to work with.

Reversed:

You might not have all the resources you need to achieve success. Maybe your talents have not yet been sufficiently honed or you are still seeking help from things out of your control. It won't be easy, but now is the time to start gathering the strength and the tools you'll need.

The High Priestess:

A mysterious emblem hovers silently within an ornate window of divine illumination. You should take time to ponder the greater significance of your own life. Relax, reflect, and consider the answers that might emerge from meditation and intuition. The outside world is strange and unpredictable, but wisdom can come from within.

Reversed:

The disruptions around you are making it difficult to find peace. Try to silence the noise and venture inward. Sometimes, the only solution to your problems is how you perceive them.



The Empress:

A crown of flowers nurtures a lush and magical forest. The Empress represents fertility, femininity and love. This may signify a pregnancy, the expansion of a family, or wonderful new connections. Embrace the feminine energies of your life and exude compassion. There may be upcoming opportunities for strengthening relationships.

Reversed:

Don't be afraid to bring out the tender parts of you. Are you suppressing your sensitive side for fear of vulnerability? Kindness and sensuality will never steer you wrong. Nothing is gained by rejecting femininity.

The Emperor:

A crystal-imbued crown lights the skies of a mountain sunrise, bordered by mighty ram skulls and watchful over the splendor of the kingdom. The Emperor brings tidings of strength, courage, and authority. This signifies a time in your life when you're in control. Use your position of leverage to uphold fairness and justice. You've reached this position thanks to your positive attributes, and in spite of your faults. Spread the virtues that got you here.

Reversed:

It's possible you're having a conflict with an authority figure or an organization outside your control. It may be challenging to face a person or entity that exercises power over you, but remember to exemplify the traits of strength and bravery that you would exhibit if you were the one in power. Those in control should never turn to cruelty.



The Hierophant:

A sacred icon is adorned with lavish decorations. Two golden keys guard the passageway to spiritual awakening. The Hierophant represents conviction in your beliefs and spiritual guidance. Oftentimes, it's useful to follow the traditions that have helped us in the past or seek the counsel of leaders with more wisdom and experience. Don't be afraid to listen, and don't assume you always know best. Allow others to offer advice.

Reversed:

Something in your life has derailed the conventional order. Maybe a respected figure has broken your trust, or the path you thought was safe turned out to be treacherous. This could be an opportunity to reconsider your values and find answers from unexpected sources.

The Lovers:

Two trees interlock their branches in a transcendent chemical reaction; one, a sensual apple tree coiled with a serpent, the other a fire-laced tree of passion. This is the pivotal moment in a relationship where you must choose how you and the people you care about will move forward. Will you commit and let the cosmic currents carry you onward, or seek company elsewhere? Never take for granted the time and energy that others spend on you. Everyone in your life is their own complex and passionate person with struggles and dreams. Carefully evaluate how you choose to relate to those you love.

Reversed:

It may be time for a long relationship to come to an end. Even the most passionate connections can have cataclysmic failures. But when things fall apart, remember your work is not over. Choose to help pick up the pieces of broken connections, help those you love to rebuild and repair, forgive and fight on for new love.



The Chariot:

The Chariot forges on, guided by a solitary wand armored with crescent moons and fueled by a rainbow vortex of pure determination. You will reach your goals through tenacity and commitment. While some blessings come from good fortune and the kindness of others, the Chariot is a sign that you must work for what you want. You may be tempted to give up, but the strength to endure is already inside you.

Reversed:

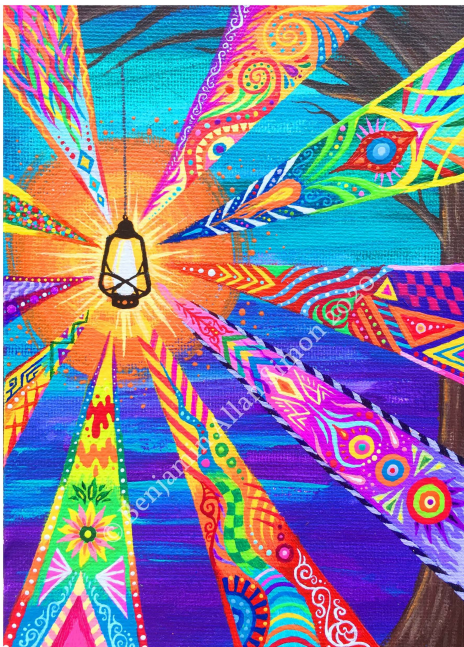
You may be feeling totally depleted of energy. Maybe you've lost all sense of direction and drive. Take this opportunity to find the reins and wrangle things back into control. You won't have influence over everything, but you are never completely powerless.

Strength:

A tame lion bears a dazzling mane of foliage, entranced by the tranquility of the natural elements. This card represents the triumph of morality over fear and ego. You can summon the courage within yourself to overcome any obstacle, including the dark tribulations of your own mind. The beast is not there to fight you, but to grant you virility. Imagine your moral convictions as a loyal guardian at your side, faithfully accompanying you as the colors of life shift and change.

Reversed:

Reversed, this card represents a complete lack of moral fortitude. Perhaps something in your life has upset the spiritual balance, or threatens to topple the stability you've worked so hard to maintain. Are you struggling to uphold the best version of yourself?



The Hermit:

A solitary lantern illuminates a wooded sunset with resplendent beams of kaleidoscopic shapes. Sometimes it is necessary to get away from the chaos of life and spend time alone, reflecting and exploring your true self. While the Hermit may seem like a lonely card at first, you may discover some of the most vibrant moments of joy and understanding through introspection and solitude.

Reversed:

While time alone can be peaceful and enlightening, sometimes we are forcibly disconnected from the world. Maybe certain people in your life have rejected you. Maybe you can't seem to find a place that feels like home. Take this time away to find peace within yourself and then you can try to form new relationships.

Wheel of Fortune:

The Wheel of Fortune churns among the mechanical cogs of the universe, revolving through all the colors that paint the solar system. The gears are about to turn the tides of fate in your favor. Look for upcoming opportunities that may seem to drop from the sky and be prepared to capitalize on anything that comes. It's not every day that the hues of the heavens align to create the perfect color, so be sure not to look away.

Reversed:

You may be due for a bit of misfortune. The universe won't always tilt in your favor, so try to accept the hardships as they come and understand that bad luck is only temporary. Disappointment is inevitable, so use it to grow stronger and hope for a better spin of the wheel next time.



Justice:

The sword of Justice strikes to the core, cutting through the deception and chaos to create fairness and balance. This may be the time for those in your life to be held accountable for their actions, whether good or bad. Either way, a big decision is imminent and in the end, the outcome will be fair. If you can, try to be your own source of justice. Find a balance between the conflicting fires of passion that burn within you. Others will see this and benefit from your righteous actions.

Reversed:

Justice reversed could signify you've been the victim of an unfair decision. A wrong has been committed and the powers that be have let this injustice go unnoticed. There may come a point where you have to accept the cruel

indifference of chance.

The Hanged Man:

An upside down pendant of a human eye hangs in stasis from a cosmic clock. Time seems to stop as the nexus of reality bends behind the pendulum. This card represents a stall or a momentary pause before reaching a turning point. Often, it indicates sacrificing oneself to a new situation. You may be on the brink of a total transformation, even if that means giving up some of the life you know today. Welcome the changes as they come. You could be winding up the components that seemed to be slowing you down and preparing to be reborn into a newer, brighter realm.

Reversed:

Are you resisting change? This card reversed could suggest a stubborn refusal to move toward a newer you. There may be tough decisions ahead and precious things to be lost, but you won't be able to move on without a little bit of surrender.



Death:

A skull disgorges ribbons of disorganized color while intricate rainbow strands bloom from the top. This card represents an ultimate conclusion. Things will never be the same and the Death card is your indication to accept what can't be undone. While the spewing paint splatters seem to suggest a shocking upheaval from the norm, the beauty erupting from the top of the skull serves to remind you of new dreams and hopes still to come. Take this ending as an excuse to brainstorm a new beginning.

Reversed:

The long-overdue conclusion to a dark part of your reality has not yet come. Does it feel like you're stuck in a chronic state of struggle? This could be a result of your own unwillingness to overcome obstacles, or it could be entirely out of your control. At its worst, Death can signify a state of frustrated despair, which is why it's important not to give up hope.

Temperance:

Life-giving nectar cascades from a hovering pitcher into a seaside chalice while fairy wings spread among the flower petals. The angelic creature seems nourished by the droplets but is partially obscured by the flowing pour. You may be reaching a point in your life where patience and moderation are the key to achieving happiness. Don't make drastic decisions, but don't stay stagnant. Seek a slow and steady way to bring peace to yourself and the ones you love. Like the modesty of the fairy drinking shyly from the waterfall, enjoy life where you can, but take humble, mindful sips.

Reversed:

Things may be collapsing into disarray. An unexpected event might have thrown off an otherwise steady routine. Look for ways to restore balance to get back on track.



The Devil:

The face of the Devil confronts you directly, shroud in wild and untamed flames of every shade. All of his senses are ablaze, bursting with the hypnotic energy that keeps you chained to addictions and bad habits. This card represents the fears and constricting forces that keep us from achieving our higher goals. But it's never too late to shatter the chains and climb toward the light. The Devil's flames may be entrancing, but there are brighter colors in a life of freedom.

Reversed:

You may feel trapped in a state of terror and bondage from which you can't escape. But there could be ways in which you have shackled yourself. Are you unwilling to acknowledge the choices that brought you here, and is it

too late to reverse them?

The Tower:

A surreal watchtower suffers catastrophic damage from a convergence of unexpected storms. The seven eyes embedded in the structure stare out agape, shocked and helpless while four inhuman eyes observe the destruction with sadistic malice. This may symbolize a similar crisis in your own life. Unplanned emergencies, accidents, or illnesses could cause your comfortable routines to completely capsize. Be ready for the worst and hope to be overprepared.

Reversed:

Things won't get better until you make a change. It might feel like the world is against you after enduring a chain reaction of bad circumstances, but you do have some sway over your own destiny. Don't leave your tower to be destroyed. Defend it and repair.



The Star:

A gleaming beacon of hope punctures the darkness of the night sky, splitting light into rainbows like a heavenly prism. It is orbited by seven smaller stars that represent the chakras. Iridescent waves of water flow from the left and right sides of the star, quenching the thirst of life. Restoration is on the way. Soon, your faith will be renewed, your mind will illuminate with new ideas, your heart will be healed, and your needs will be met.

Reversed:

Your hope for better times may have just passed you by. The magnificent rays of starlight can't reach every living thing, but there will be other opportunities to come. It's difficult to see the light above without being able to reach it, but patience will get you through.

The Moon:

The crescent Moon cracks open, and the mysterious essence of the subconscious mind spills into a pool of water that sits beneath two towers. Contained within the Moon is a treasure trove of unknown possibilities. Much of the Moon's energy is an illusion, spawning nightmares and confusion, but some of it, if harnessed correctly, can feed our creativity and imaginations. Be mindful of deception and be careful how you act on your intuitions. Some colors are darker than they appear.

Reversed:

The confusion that was muddying the waters of your mind is finally clearing up. Now that solutions are starting to appear and answers are becoming obvious, this is a good time to address problems head-on and face the world with pristine vision.



The Sun:

Light, color and energy burst from the Sun in infinite abundance. Beauty and hope blossom beneath the rays. Life has magnificent things in store for you and good fortune is growing in the warmth the Sun has provided. Happiness is always achievable and this is your moment to obtain it. You've been given the gift of a new sunrise and unlimited supply of solar energy, use it to find success in everything you do.

Reversed:

This may not have been the happiness you quite expected, but there is contentment to be found in what you have. Don't stop working toward a brighter future, even if you don't feel joy and optimism as strongly as it was promised. The Sun won't grow dimmer and neither should you.

Judgment:

The wings of an angelic entity descend to Earth and blow three empyrean trumpets to signify final judgment. Sanctified messages written on vivid, ethereal scrolls ripple into the ears of the living. An era has come to an end. It's time for a metaphorical resurrection to start a new period of life, nearly from scratch. This could be your chance for redemption, or to entirely reinvent yourself. You may face consequences for decisions in the past, but never without opportunity to start anew.

Reversed:

While the call to judgment from the heavens is wise and powerful, our own human judgments might be too hasty or stalled by indecision. If you've been unable to safely bring yourself to a comfortable conclusion, you may need to take some time for private reflection. Even if the right answer isn't clear at first, it may become obvious over time.



The World:

A womb-like nebula cradles a rainbow planet, all encompassed by a verdant wreath and the four symbols of Spectrowhirl Tarot. The World represents the conclusion of a full cycle. Your journey has reached a triumphant end and you are ready to start the next phase, but this time with a brand new toolkit of experience and wisdom to help you. At this point, the opportunities ahead of you seem limitless and prosperity is almost certain.

Reversed:

It may seem your grand adventure had a severely disappointing conclusion. You had hoped to achieve victory long ago, but it seems like nothing you do will get you there. Try to suss out the cause of the downfall and account for it next time. The cycle will start again.

Ace of Wands:

A rustic, handmade wand with a cut gem top sprays the psychedelic fires of creation through a grove of young plantlife. The wand brings the luminous fuel of inspiration and new potential. When powerful tools like this are handed to you, don't turn them away. This may be your chance to start a project or bridge a new path to success. The entire color palette is at your disposal.

Reversed:

The reversed Ace of Wands could represent an inability to execute your vision. The seed of an idea is there, but you don't have the means to turn it into reality. Something is holding you back and hindering your ambition.



Two of Wands:

Two wands connect their powers to spark a new cycle of creation. Both sides have unique colors to contribute, but are each pulling from the same spectrum of light. This card represents the beginning processes of building and planning. You have a vision, but are only getting ready to carry it out. Perhaps you need the help of others, but you must carefully balance your elements to achieve harmony. Every new venture is exciting, but they are also rich with uncertainty.

Reversed:

The Two of Wands reversed could indicate a total lack of vision. Maybe you took the first steps but had no idea where you wanted to go. This could prove to be a recipe for disaster, or at least disappointment. Take a few steps back

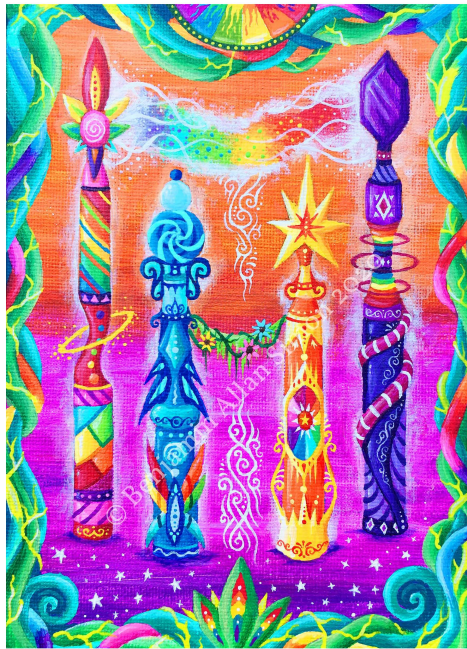
and plan ahead.

Three of Wands:

Three scepters criss-cross and spout waves of unique chromaticity. The natural world around them seems to synchronize with this magical display, illustrating how things are starting to work together. While the Two of Wands indicates the planning phases of a new project, the Three of Wands is a sign of synergy falling into place. The scepters represent the propulsion to continue onward, expand and explore. Keep up the good work.

Reversed:

A reversed Three of Wands could suggest a flaw in the planning phase. While it might have seemed like you effectively outlined your future, things are not working out as they should. The synchronicity you need to find success is falling into dissonance. Back to the drawing board?



Four of Wands:

Four wands with festive designs stand tall like decorations at an enchanting celebratory event. Two of the wands are draped with a garland of flowers, two others are connected by a strand of spectral energy. This card signifies unbridled bliss. This is the time to party and rejoice in your achievements. Reunite with family and friends. Enjoy the comforts of home. Feel proud of what you've built and what you've overcome.

Reversed:

A reversed Four of Wands can still be an indication of comfort and happiness, but maybe not in the way you expected. Sometimes our strained relationships can hold us back from the harmony we crave, but don't let family or friends dampen the bliss of your accomplishments. You should be proud of yourself, even if others don't seem to care.

Five of Wands:

Five wands of simple design shoot off beams of magic in an erratic display of dissension. Each wand seems to be emotionally lashing out against the others, but none are effectively harming the others. In a way, the fighting wands almost seem to be engaged in a choreographed dance. The Five of Wands serves to illustrate the nature of people to disagree when differing perspectives intermingle. This doesn't have to be a time of violence or struggle, but rather an opportunity for unlike people to vent. This battle could even be constructive if conducted carefully. Embrace diversity. All colors should be integrated.

Reversed:

A reversed Five of Wands could suggest an outright avoidance of conflict. Some heated debates can be healthy. It is normal for egos to clash and compete and nothing will get accomplished if all parties remain silent. Your voice should be heard, even if you may be brought to task for it.



Six of Wands:

One large wand with a wreath halo stands tall above the others, streaking a lustrous starscape like a victory banner across the sky. Five smaller wands join in the celebration, firing off their own modest firework displays. The Six of Wands represents a powerful figure heralded as a champion or leader. Perhaps a prideful authority figure you know has been over appreciated. Why should one person get all the credit for the work of a group? That said, a triumph is a triumph and any opportunity for celebration should be considered.

Reversed:

In reverse, this card could mean quite the opposite of victory and praise. Have you been a part of a failed project? Were you forced to take some of the blame? It can be hard to achieve success when those around you aren't willing to help. It's rarely one person's fault. Pick yourself up and don't take it too personally.

Seven of Wands:

A single wand with a rainbow-tipped star stands strong in the background, splaying a shield of luminescence behind six other scepters. A wild onslaught of magical weaponry comes from all angles, but the background wand continues to defend itself from the pandemonium. You may be fighting to protect the things you hold dear. You feel completely alone, but you have the strength to hold your ground. Keep standing up for what you believe and don't let the wily colors of mayhem distract you.

Reversed:

As obstacles come at you relentlessly, you may feel like you don't have enough magic in your wand to maintain that shield. Sometimes it all becomes too much. Fatigue overpowers you and surrender is understandable. Even if you give it your all and are defeated, it doesn't mean you're a failure.



Eight of Wands:

Eight slender wands rocket down from the cosmos, moving at blinding speeds. This is a time for rapid change or sudden transitions. Things are happening and fast and you'd better be ready for whatever falls from the sky. Those who are quick enough and prepared can capture the magic of the most fleeting opportunities. This card can also signify a major move in life or speedy progress. In every case, don't blink and miss the light show.

Reversed:

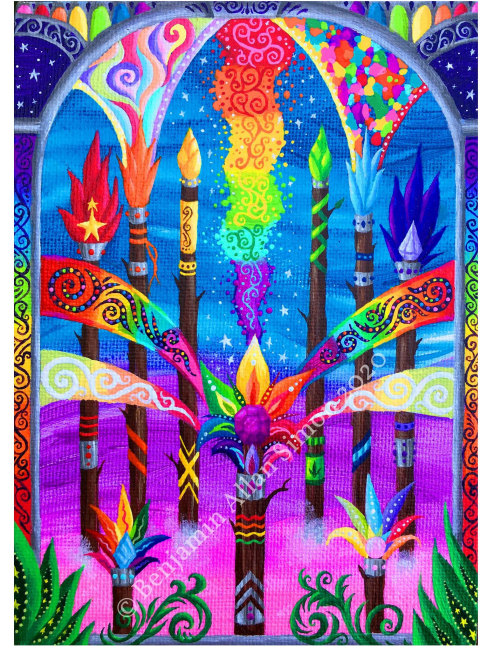
While this card represents motion in the upright position, the Eight of Wands reversed is a sign of frustratingly slow progress. Just when you think things will get going, there are delays, obstacles, and derailments. You can do whatever you can to get back on track, but sometimes the journey is doomed for a late arrival time.

Nine of Wands:

Nine wood-handled wands stand upright with flowered tops at varying stages of bloom. These budding scepters represent the slow process of healing and recovery. The dignified structure of the border symbolizes a life worth fighting for and a home worth protecting. The wands seem to be standing guard at the boundary line, ready for battle. There may be times where you feel frail, like you haven't fully flowered, but perseverance is essential at every phase of growth.

Reversed:

It's clear that there are important aspects of your life to protect, but you may not have what it takes to maintain your defenses. Do you feel like you're standing on your own, stuck performing a duty you no longer believe in? Will help ever be on the way? Maybe this is a good time to evaluate the structures in your life that you're trying to guard and determine if they're worth your energy.



Ten of Wands:

Ten carefully-crafted scepters form a circle around a spiral vortex of colors. This card represents the final result of a lot of hard work and planning. The wands are almost perfectly aligned, placed precisely where they're meant to be, all pointing toward the same goal. This could signify a grand achievement worth commending yourself for, but sometimes all you can see is the exhaustion that resulted from the process. The hypnotic spiral seems to suggest that the work is ongoing, pulling you in toward future burdens and responsibility, but be proud of the beautiful things you've already sowed.

Reversed:

Viewing this card upside down results in a nearly identical image. The vortex is still drawing you deeper to hard labor and lack of recognition. Maybe now your workload is larger and the responsibilities have increased, but that doesn't mean you can't handle the pressures. Or perhaps the load has lightened a bit and you can work with others to create symmetry. In either case, nothing is accomplished without hard work.

Page of Wands:

A brightly colored staff containing both a sun and a star shines with an ornamental halo. A robe of flames engulfs the wand, and a rainbow of stars cradles it like a royal sash. The Page of Wands represents unrestrained optimism, cheerfulness and charisma. There's nothing that can't be accomplished with a passionate attitude and fearless approach to new challenges. Now is a good time to brainstorm ideas, learn about the world, or just try something new.

Reversed:

What the Page of Wands emanates in the upright position, it lacks in the reverse. Maybe you feel depleted of creative energy. Maybe cynicism and failure has brought you down and crushed your motivation. It might be hard to do anything but stay home and wish for better times.



Knight of Wands:

A bulky scepter with a burning core spurts flames in four directions, lighting the torches of the castle walls and igniting the sky. The Knight of Wands indicates an enthusiastic force, unhindered by doubt and ready for anything. Nothing stands in your way and you have the courage to face any obstacle. While the Knight of Wands is a positive force of warmth and loyalty, this sort of energy can be reckless at times. What some perceive as charm and confidence could also be construed as shameless or cocky.

Reversed:

The reversed Knight heightens the negative attributes of arrogance and impulsivity. Action and determination are good, but there is a time for careful thought and tact. Don't think before you act.

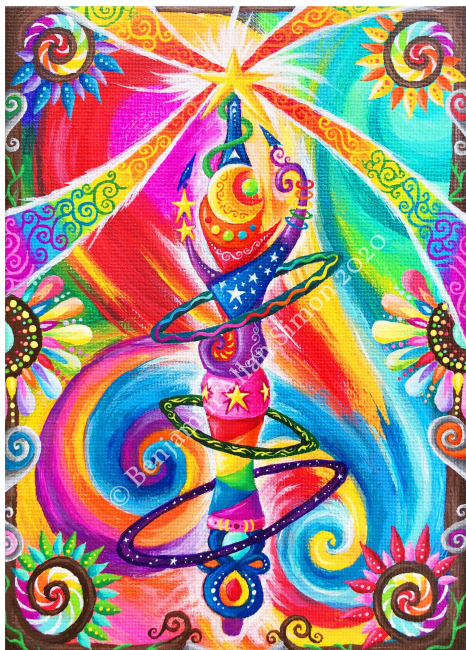
Queen of Wands:



An elegant staff with a crescent moon top and a spinning rainbow ring seems to be magically generating its own small universe. The Queen of Wands is a fountain of generosity, extroversion, creativity, and enthusiasm. It symbolizes a strong female figure of authority who has humor and confidence. This could be a sign that people see these virtues in you, or maybe this is a good time to strive to obtain the traits of the Queen of Wands. That said, there is an air of attention-seeking and self-absorption that comes with the package.

Reversed:

The reversed Queen of Wands signifies the failure to uphold the good-nature and charisma needed to earn respect. While others exude confidence and social energy, you might spend most of your time by yourself. But not everyone is happy in a position of authority or as the center of attention. Your own colors can shine as they are.



King of Wands:

A majestic staff orbited by three rings emits four restrained rays of rainbow light. The King represents total control and absolute respect. This could symbolize a person in your life that people idolize or envy, but no one can deny his strength and ambition. If you aspire to be the one with the vision and the creative force, try to mix with the colors of the King of Wands. Or maybe you feel most comfortable helping others you love and respect execute their own plans. Everyone has a role in achieving a goal, but don't lose steam.

Reversed:

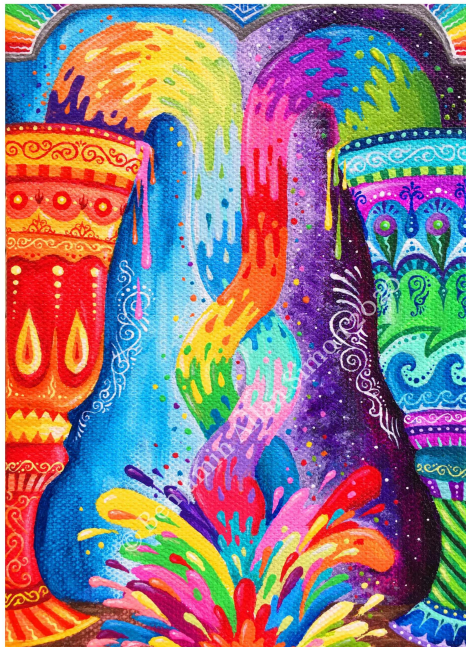
In a position of power, some can be too harsh and controlling. A reversed King of Wands could represent those attributes in yourself or someone in your life. Try to fight back against overly demanding leadership and work towards unity, even if that means yielding some of your own control.

Ace of Cups:

Pigmented juices gush from the brim of a golden chalice resting neatly on the surface of a crystal clear pond. The Ace of Cups signifies a new beginning and an abundance of emotion. This could mean your energy has been renewed or you feel a new surge of passion. Utilize all the colors you have now, because they may not last forever. Drink deeply from the cup of creativity.

Reversed:

The cup has run dry. The energy you need to connect with people or finish your personal goals is just too feeble. Take some time to rest and recharge. Maybe soon your cup will be overflowing again.



Two of Cups:

Two goblets from parallel worlds meet to exchange their multicolored liquids, which intertwine and mix at the base of the table. This is a time for unity and togetherness. If things aren't going well for you now, they will soon. Embrace new partnerships and share your own plentitudes with others. Some of the most beautiful colors emerge when you mix paints together.

Reversed:

The reversed Two of Cups symbolizes rejection or separation. Maybe you tried to offer your cup to somebody else and they turned you away. You have a lot to give but no one to share with. This is a time of unbalance.

Three of Cups:

Three cups are stacked in a pyramid while liquids pour onto them like a faucet. The streams splash into rainbows as they overflow the goblets. Cheers to a job well done. This card symbolizes celebration, surplus, and community. Spend time with family and friends and share your warmth and joy. Support each other in your ambitions. Indulge in the pleasures that make you most happy.

Reversed:

Seeing the Three of Cups reversed could signify that you lack the community bonds that make you feel safe and welcome. Or maybe you've become suffocated by social interaction and sick from over-indulgence. In either case, use this time to reflect and enjoy time in solitude. There will be other opportunities for parties and pleasure.



Four of Cups:

A goblet gives away its precious liquids to three others, but the fluids bounce from cup to cup as if none of them truly appreciate the gift. Above them all, spilled and wasted waters ooze from the border. The Four of Cups signifies indifference, apathy, and ennui. You may have given away something important to you without a second thought, and now it's gone forever. Detachment and disillusionment is dominating your emotional state, and the worst part is, you don't really care anymore. Spend some time taking stock of what you have left and finding a new appreciation for it.

Reversed:

The Four of Cups reversed still indicates a time of detachment from others, but maybe you willingly chose to spend time alone. You may feel a bit somber, but this is your chance to refill your own cup and enjoy the things you have. Find acceptance within yourself.

Five of Cups:

Five beautiful chalices are overturned, all of their contents spilled. Now they float aimlessly, dribbling their final remains into the black void below. A sign of great sorrow, heartbreak and loss. This may be a time of grieving or suffering for you. Maybe you feel like everything has been taken from you and you have nothing good to hope for. It's okay to spend time in mourning and regret, but don't stew in it for too long. Pick those cups up and salvage what you can.

Reversed:

When the Five of Cups is reversed, you may have finally reached a time for recovery. The pain has been felt, the guilt has passed, and now you're ready to gather yourself and keep going. You will always take some of that pain with you, but the bad taste doesn't have to dominate.



Six of Cups:

Three cups generously dump their essence onto three others below, which gratefully drink to feed their blossoming flowers. This card signifies a time of healing and sharing. As the plants are growing up together, you may be reminded of happier times in the past or the innocence of childhood. Guzzle those cozy memories and let the peace and pleasantries power you for harder days.

Reversed:

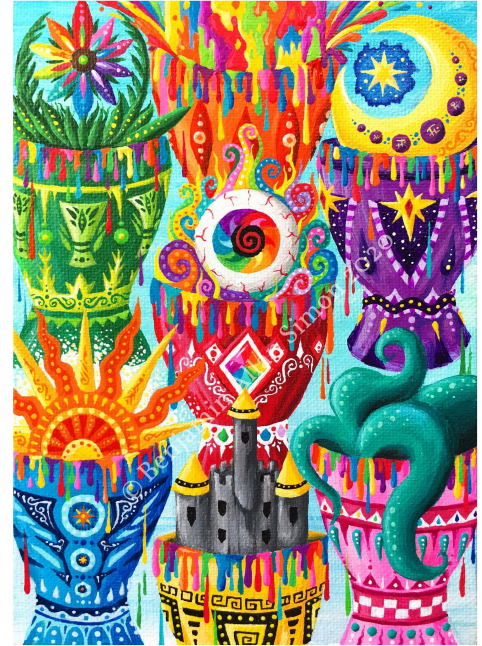
Sometimes nostalgia can hinder the present. Don't focus too much on the good times you used to have, they'll block opportunities for good times to come. You can't go back to the comforts of home and childhood, so search for those warm and fuzzy feelings elsewhere.

Seven of Cups:

Seven ornate chalices contain an array of objects and opportunities. Each one appears to be a gateway into an unknown future, but not all of them seem promising. Now is the time to consider your options wisely, following your wits instead of your heart. But don't be intimidated by tough decisions. The ability to choose is an exciting opportunity of its own. Every path is full of vibrant new adventures and unlimited possibilities.

Reversed:

You may be feeling completely overwhelmed by your current situation, and no clarity or order seems to be in sight. Every potential option might seem frightening in its own way. Sometimes the best choice is the one that minimizes difficulty.



Eight of Cups:

In the center of an optical illusion, two goblets blast their contents away, while four others empty themselves into tiny silver cups that could never contain it all. This card signifies a total abandonment of your current situation. You may have felt completely unsatisfied with the state of life and threw it all out in the hopes of a fresh start. Some challenges are too much for our delicate vessels. The vigorous energy of the cups depleting themselves indicates the anger and frustration that comes with giving up. But like the circular shape of the draining goblets, starting over is an essential part of abandonment.

Reversed:

Upside down, the Eight of Cups looks largely the same, perpetuating a state of cyclical confusion from which you can't seem to escape. No matter how many times you shed your responsibilities and try to start again, the problems keep filling back up. Try to find a way to break the cycle and escape this limbo.

Nine of Cups:

Nine individual goblets stand stacked up with care, as if in a proud display. All of them boil over with warm, bubbling contents. This is the card of plenty. You got what you wanted, and now you feel content in your bounty. The heat emanating from each cup signifies the excess. Everything you have is burning full force, and you couldn't be more grateful. This emotional satisfaction won't last forever, but you have plenty to share.

Reversed:

Yes, you may have everything you need, but you still feel a little empty. Maybe this is the epitome of "money can't buy happiness." Even with so many expensive, full chalices, there's something lacking. Emotional fulfillment can't always be satisfied with wealth or achievements.



Ten of Cups:

Ten small cups join together in a harmonious ring, showering their surroundings with a joyous display of color. The Ten of Cups signifies jubilation and contentment in the purest sense. You have everything you want and there's nothing left to do but bask in the gratification. Your home life is stable, your financial needs are met, and the hues of the world look more spectacular than ever.

Reversed:

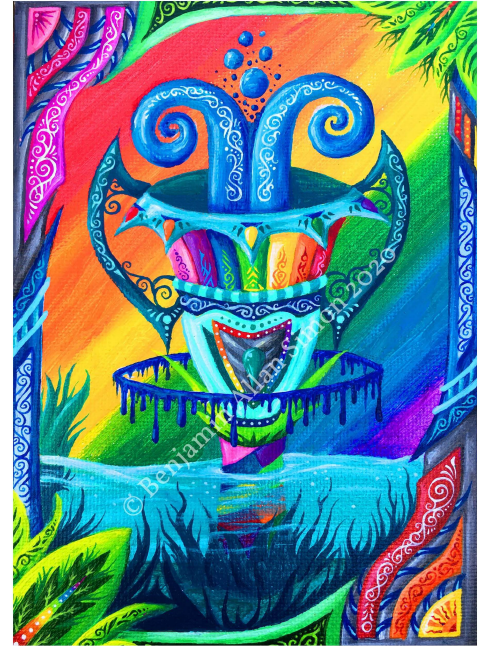
The perfect life you envisioned for yourself may have been damaged and broken. Maybe some of the components you hoped would come together in harmony simply didn't work out. This could be the time to evaluate whether you should try to mend these imperfections or let them go.

Page of Cups:

A small cup stands in a shallow but pristine pond of water, spouting an unassuming fountain from the top. The Page of Cups signifies the immaturity, curiosity, and vulnerability of youth. Maybe you have not yet fully emerged from the water and are still finding your legs. You have creativity and sincerity to offer the world, but neither are fully developed. This is a beautiful opportunity to approach new challenges with an untainted mind and a pure emotional state.

Reversed:

The negative attributes of the Page of Cups are the focus when the card is reversed. That immaturity can rear its head as childish naivety, and that vulnerability can easily get you hurt. Are you feeling insecure or emotionally exposed? You might be forced to grow up faster than you expected.



Knight of Cups:

A large and top-heavy goblet gladly accepts a downpour of disordered rainbow liquids. The cup is strong enough to contain it, or so it believes. Like the Page of Cups, the Knight exhibits some degree of immaturity, but from a place of earnestness and flirtatious sincerity. This is a card that signifies romance or a pleasant exploration of something new. You have the drive and the eagerness to take on any challenges, and the charm to talk yourself out of any situation.

Reversed:

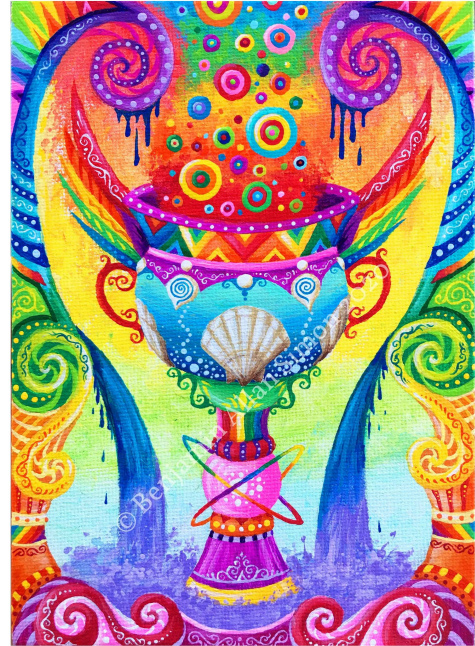
The Knight of Cups is already an emotional card, so in reverse, it may signify an excess of emotion. Just as the goblet is happy to take on the overflow of liquid, there may be times when your supply of passion runs too hot. This could lead to moodiness, rash decisions, or unrealistic expectations.

Queen of Cups:

A robust goblet embellished with seashells emits vivid vapors and multicolored bubbles while standing in a burbling, luxurious bath. The Queen of Cups symbolizes an outpouring of emotion, but with maturity and refinement. She offers stable guidance and freely expresses empathy and affection. The Queen of Cups is in tune with the powerful waters of the ocean, touching just at the base but not overtaken.

Reversed:

In reverse, this card signifies a situation where that excess of emotion is less in control. Maybe you've been unable to keep a level head in important scenarios, or have sought counsel from people you trust and received nothing in return. Take some time to yourself to satisfy your own needs instead of relying on others.



King of Cups:

A regal goblet with a crown rim surges with a cascade of soft, pastel colors. From the center, the cup is nursing delicate flora. Like the Queen of Cups, the King exhibits a strong control over his sensibilities, using his passion as a force for good. Every challenge is faced with diplomacy, respect, and a balance between the mind and the emotions. This card calls for restraint, even during the most spirited discussions. Like the King of Cups' evenly dispersed geyser of muted colors, try to express yourself generously, but without bias or an off-putting severity.

Reversed:

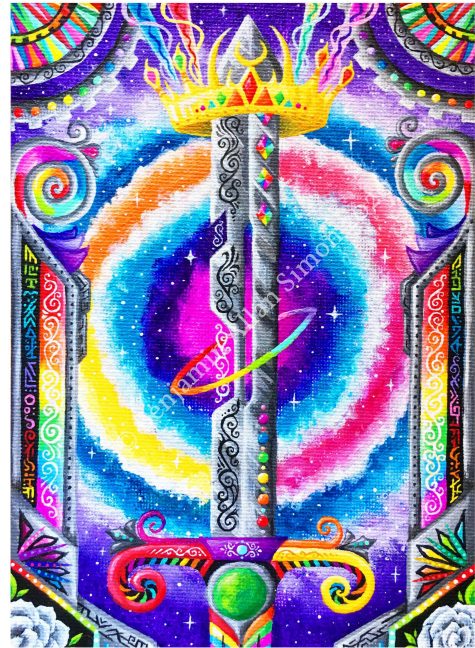
The King of Cups reversed signifies a vindictive misuse of emotional insight. Perhaps someone in your life has abused their strengths to take advantage of other people. Or maybe you're feeling emotionally unstable in some way. When the colors burn too bright, it might be beneficial to tone down the intensity.

Ace of Swords:

A jewel-encrusted sword hovers in space before a twinkling cosmic wormhole. The Ace of Swords represents sudden enlightenment. Maybe you've had an intellectual breakthrough or the urge to engage in an educational pursuit. Like the starscape sprawled out behind the sword, there is a vast universe to explore, but you have the capacity to understand it all.

Reversed:

Reversed, the Ace of Swords could indicate a mental block. Something is fogging your view of the spiritual enlightenment you seek. Cut through the cloudy nebula of confusion and seek answers.



Two of Swords:

Two sabers with colored inscriptions cross over rocky waters. An embroidered blindfold is interlaced between the blade while a gaping eye watches from above. The Two of Swords can represent a conflict between decisions, or the need to make a just decision blindly. Even while the eyes are closed, the third eye is aware and gathering spiritual insight from beyond the Earthly realm. Trust your intuition and weigh your options wisely.

Reversed:

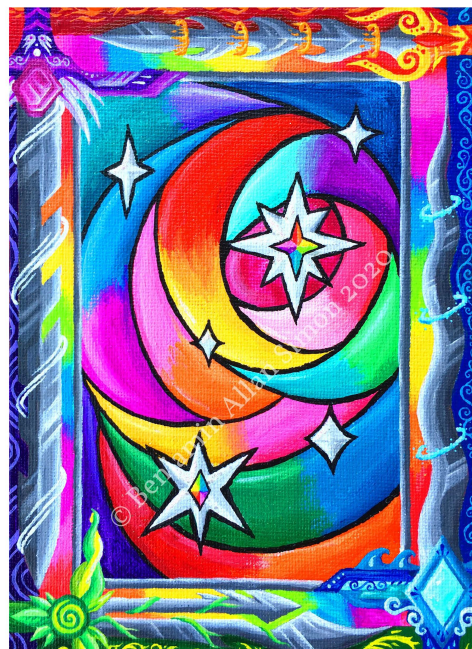
You could be stuck on a teeter-totter of indecision. Something is keeping that blindfold tight around your eyes and making it impossible to reach a reasonable conclusion. But even without sight, we can imagine the whirling colors of the natural world. Use your inner guide to find answers, even if it means committing to the unknown.

Three of Swords:

Three sharp fencing swords impale a mechanical heart that pumps the chromatic lifeblood of prosperity. A feeble rainbow tries to emerge while a violent rainstorm rages on. One of the most painful cards in the deck, the Three of Swords means a time of severe heartbreak and emotional turmoil. Something or someone in your life has made you feel wronged in a way that seems impossible to recover from. That part of you may be dead and gone for good and the only way to move forward is to cut it loose. Wait for the rains to clear and focus on the faint rainbow.

Reversed:

While some emotional pain may have befallen you, you're doing your best with a bad situation. You may never be able to fully extract the blades that pierced your core, but you can live with them. Not all pain makes you stronger, but nothing's stopping you from trying. You survived.



Four of Swords:

Four swords representing the four elements form the frame of a stained glass window of a celestial scene. This is a time for rest and recovery. Like the peace and quiet of an opulent cathedral, the window provides gentle calming light, but obscures the hustling clutter of the busy world with translucent colors. In here, the forces of nature are controlled and balanced. Soon, you'll have to leave this place of healing and return to the fast-paced reality, but for now you can sleep. Simmer gently in the calm.

Reversed:

This card reversed indicates a desperate need for rest that isn't coming. Maybe you just can't find the time. Too much is demanded of you. You can peer at the stained glass windows from outside longingly, but can't get inside.

Five of Swords:

A single victorious blade faces down four smaller swords turned against it. It is clear the larger blade has control of the situation, but the conflict continues. The gears of the cosmos and rickety clock hands of time turn continuously. Contention is written in the stars. This card serves as a warning against violence to find resolution. There may be people in your life who believe they must win at all costs, but there are peaceful ways to reach consensus. Yes, a collision of personalities is as inevitable as the changing seasons, but you don't have to be the one wielding the blade.

Reversed:

The reversed Five of Swords has a slightly more positive outlook. Perhaps you and those around you have found a way to reconcile your differences, but rarely without some kind of combative exchange. Prioritize decency and ensure everyone makes it out safely.



Six of Swords:

Swords are plunged into the depths of the ocean, some floating, some fully submerged. The sun sets on an era, signaling new days to come. This card symbolizes a departure from old ways and a journey to something different, hopefully something better. The trip may not be easy, as the tempestuous waters would suggest, but it's an expedition that has to be made. Like the sinking swords, there will be aspects of your life left behind, but expect to discover parts of yourself you never knew were there.

Reversed:

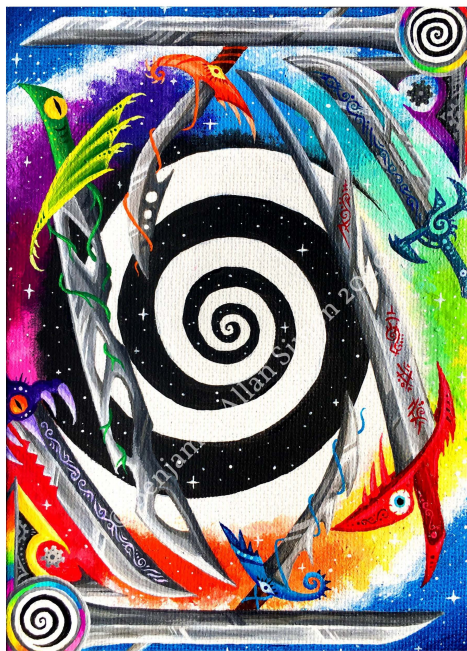
If this card is reversed, you may be unwilling to set off on a journey, even if it's necessary for personal growth. Like the perpetually rolling waters of the ocean, change is inevitable, so why refuse the shifting tides within yourself?

Seven of Swords:

Five swords are pulled from a psychedelic pool as if stolen from the forge where they were formed. A stronghold stands with two blades left behind. The Seven of Swords signifies deception, theft, and betrayal. Someone may have taken something that was rightfully yours, or tricked you into a humiliating position. This card can also represent a carefully orchestrated scheme, usually (but not always) of a sinister nature. In most cases, the ruse won't last long. The swords are dripping with evidence of the thievery.

Reversed:

The Seven of Swords reversed could suggest the crime has been committed against the self. Are you plagued by regret or shame? Do you fear the exposure of the truth? If there is any way to right the wrong and lessen the consequences of the deception, now would be the time.



Eight of Swords:

Eight frightening swords with beastly eyes revolve around a cosmic whirlpool, as if forever spiraling toward the void but never reaching it. This is the card of imprisonment. You're trapped in some seemingly eternal loop, blind except for the negativity perceived by the monstrous eyes of the blades. Worse yet, this state of paralysis is detrimental to your safety and likely the result of an act of malice. Even so, there is always a way out. Resist the gravitational pull.

Reversed:

The reversed Eight of Swords could signify a triumph over self-imprisonment. What vices have you recently shaken off, or personal struggles have you overcome? You may not be entirely free of the void yet, but you have the strength to escape. The only thing holding you back is self-doubt and a failure to see the bright light beyond the downward spiral.

Nine of Swords:

Blades of nearly every shade stick rigidly from an invisible wall, suspended in the cold vacuum of space. Below them, the twisting colors of the subconscious mind writhe and mutate. This card represents the terror we feel in our darkest hours and the nightmares that bleed into our waking life. You may feel penetrated by the blade of anxiety or trapped behind an unscalable wall of despair. What dark thoughts are hiding beneath the surface of the mind, and how can you alleviate your fears?

Reversed:

With the reversed Nine of Swords, some clarity might come in understanding what worries are dragging you down. Maybe this is the time to seek help, explore the logical causes of what hinders you, or find ways to lift the crushing weight. Sometimes, the best answer is to face these anxieties head on. Is it possible to wield these frightening weapons to your own advantage?



Ten of Swords:

Ten unique swords pierce the layers of the cosmos. A terrifying dark red entity rotates in the background, in line with the celestial charts of destiny, but the worst of the pain is over and the multitude of complicated problems that plagued you have finally come to an end. Just as the clockwork of stars in orbit will continue to move toward a new era, so can you. Use this conclusion as an opportunity to start fresh and learn from the difficulties you've overcome.

Reversed:

Your struggles are on the precipice of a final conclusion, but you can't seem to reach the end. Try to evaluate your situation and discover what might be delaying the difficult decisions. Maybe it's time to accept defeat, nurse your

wounds, and move on.

Page of Swords:

A short blade soars over a network of colliding galaxies. The hilt contains a lively eye that has just sprung wide open as electrical currents fuse to the steel of the blade. The Page of Swords signifies inspiration and justice, particularly as a result of the youthful desire to do the right thing. Perhaps you or someone in your life is eager to collaborate on projects for the betterment of the community. Approach these situations with heartfelt fairness and you'll earn respect in your successes.

Reversed:

What the upright Page of Swords offers, the reversed Page lacks. This could signify an intellectual failing or lack of productivity. From this perspective, building something beautiful seems like an impossibly difficult task and you don't even know where to start.



Knight of Swords:

A massive mechanical sword streaks across the galaxy, moving with such speed that the very flesh of reality seems to bleed at its tip. The turbulent clouds of a nebula forcibly integrate behind it. The Knight of Swords is alive with ambition and energy. There is an unwavering loyalty implicit in this card, suggesting a person who's desperate to please or otherwise driven to complete the task at hand and fast. This sort of voracious initiative could be exactly what you need to achieve your goals, but there may be risks. Is now a time for impulsive action, or should you stop to plan?

Reversed:

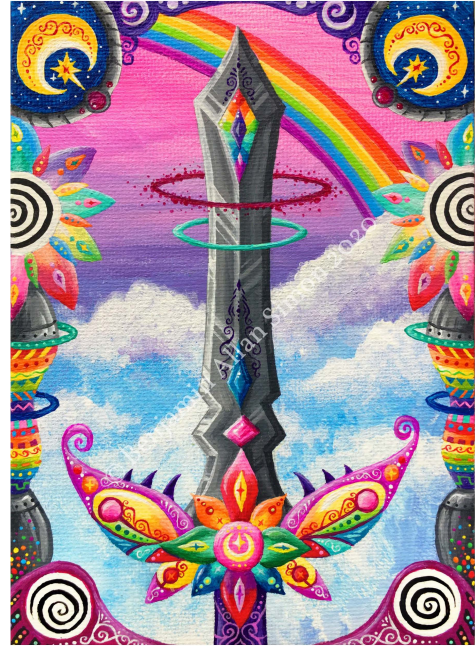
In reverse, the Knight of Swords is prone to big mistakes. Never satisfied with the current state affairs, this card signifies an unwarranted need to move, work, and meddle. Are you really accomplishing anything or just exerting pointless energy? All that pent up energy has to come out somehow. Find a safe outlet.

Queen of Swords:

A florid sword with a hilt made of fairy wings and flower petals stands symmetrically over a saccharine cloud formation garnished with a perfect rainbow. The Queen of Swords represents a strong and direct figure with clear motives and a lifetime of experience. This person is honest, smart, and above all else, unbiased. Though the card signifies a reliable force for good, it is not all-benevolent, as indicated by the spikes at the sword's hilt. The Queen is willing to enact harsh judgment where it's warranted. But there is beauty in the bold colors of justice.

Reversed:

The reversed Queen of Swords signifies the exact opposite of honesty and justice. This is a sign that someone in your life is acting with cruelty, dishonesty, or emotional neglect. These are not the attributes you want surrounding you.



King of Swords:

A mighty broadsword is jutting from the surface of a colossal planet. The base of the blade contains its own celestial clock. Even the edges of the hilt are sharpened, as if the weapon doubles as an enormous axe. The King of Swords represents an unfaltering icon of truth, authority, and order. It also indicates intellectual or scientific achievements. Though the King exemplifies a steadfast moral code and integrity, there is also an implication of strict law and punishment.

Reversed:

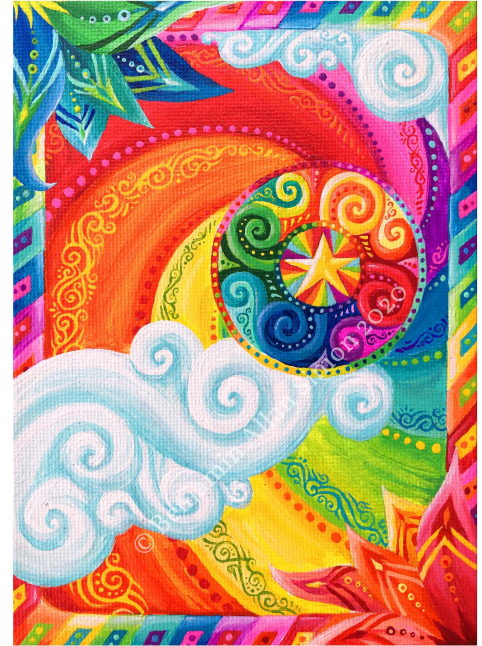
When this card is reversed, the scruples of the King of Swords vanish and are replaced with the whims of a tyrant. This may be expressed as willful ignorance or closed-mindedness, but at worst could indicate ruthless violence or sadism. Where in your life are you seeing these dark colors emerge?

Ace of Coins:

A colorful token is presented on the wisps of a fluffy white cloud. A gift has been handed to you from the heavens and you feel an obligation to use it as sensibly as possible. The Ace of Coins represents a new beginning, most likely in terms of finance, business, or social stability. You could be on the verge of changing jobs, finding new monetary opportunities, or improving creature comforts. If you believe you'll have good fortune, you will receive it.

Reversed:

Are you hesitant to snatch up new opportunities? Maybe you're worried about upsetting your sense of normalcy or taking financial risks. Those who believe they have bad luck tend to let big chances pass them by.



Two of Coins:

Two coins balance at the ends of a loop of interconnected, multicolored currents. This symbolizes equally important elements being juggled amidst the non-stop motion of day to life. The Two of Coins signifies that you can obtain financial well-being and a stable home life if you are capable of organization and time management. But it's not all about planning, it's also about a willingness to adapt to ever-changing circumstances.

Reversed:

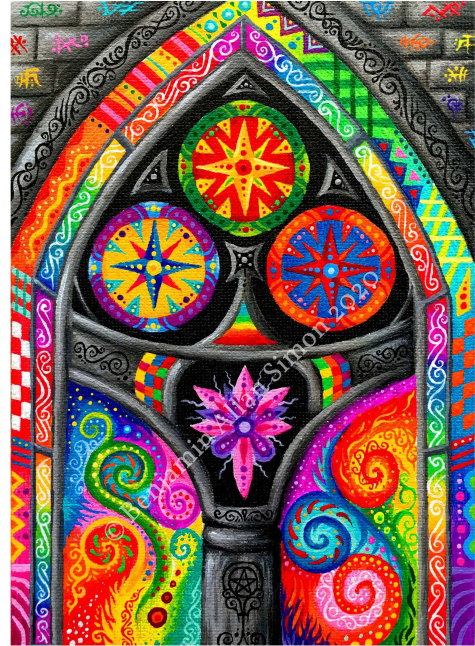
In reverse, this card suggests disarray and disorganization. There are too many strings pulling you in different directions. Despite your best efforts, you can't seem to strike a work-life balance. What areas need the most attention? Where can you cut yourself slack?

Three of Coins:

A detailed cathedral window emits dynamic light in its finished state. The Three of Coins represents a completed project that took time and talent. Be proud of your craftwork or hard labor and show gratitude to collaborators. This took cooperation, so be sure to distribute credit among those who helped you get where you are. In some cases, this kind of teamwork and talent can even be harnessed to generate income.

Reversed:

If this card is reversed, it might mean your collaboration efforts fell apart. Maybe nobody was willing to help, maybe they made things worse. Maybe you've found yourself lacking the necessary skills to accomplish your goals. Hopefully, this is simply a matter of believing more in yourself and utilizing the talents you already have.



Four of Coins:

A collection of four luxuriant tokens are nestled in their respective corners, almost like jewelry placed in a treasure chest. The coins are embossed with floral insignias, as if each one is hand-carved and irreplaceable. This is the card of the miser, relating to those who are proud of their wealth and unwilling to part with it. This isn't necessarily a bad card, as there's nothing wrong with being frugal, but be careful with how you choose to hoard your possessions and be willing to give charitably.

Reversed:

The reversed Four of Coins indicates the negative side of financial conservatism. It could be a sign of greed or selfishness, either in yourself or those around you. Or perhaps your desire to acquire material things is the

hidden catalyst to other challenges. Yes, there are many beautiful colors to behold, but beauty is meant to be shared.

Five of Coins:

An ostentatious stained glass window faces out at the world. Five hypnotic emblems are integrated into the design, brazen reminders of the lavish comforts behind the pane that many will never have. The Five of Coins is a symbol of poverty. This could mean failing health or financial shortcomings. Everyday, we're surrounded by images of wealth and luxury, which only deepen the ache of deprivation. In the wrong context, beautiful things can feel like a mockery. Keep traveling on. Maybe the next window will be open wide enough for you to climb in.

Reversed:

The Five of Coins is rarely a good sign, but seeing it in reverse could indicate the start of getting back on your feet. Maybe you've experienced emotional or financial destitution, but there's nowhere to go but up. Even if horrible circumstances have left you empty-handed, there may be riches to be found in spiritual pursuits.



Six of Coins:

Six motley coins fall from satchels, willingly donated to those in need. Prismatic coils of light surround them, evoking the feelings of exhilaration you get when presented with a gift or prize. The Six of Coins is the card of generosity. You may be in a position now where you can donate to the needy or give away the spoils of your labor. In fact, there may be a moral obligation to be charitable. If you are the one in need, don't be afraid to reach out to the community for help.

Reversed:

Sometimes, those with financial leverage use it for their own gain. This card reversed could indicate someone you know is abusing their wealth, extorting others, or exploiting the less fortunate. There's a responsibility that

comes with monetary stability.

Seven of Coins:

A steadily-growing vine sprouts from the Earth, bearing seven tokens of assorted sizes. This card represents the fruits of your labor finally emerging. You have been persistent in your efforts to create something and it's nearly time to reap the rewards. You're turning your talents into profit. The vine has not fully matured, the fruit is not ready to harvest, and there are other fields to be cultivated. With the success of hard work comes an ongoing commitment. Even so, don't over-expend your energy. This is a clear sign to stop and appreciate the wonderful things you've grown.

Reversed:

The profits you expected didn't come in droves. What felt like hard work and dedication didn't exactly pay off, leaving you to wonder where you made an error or cut corners in the process. Perhaps all you need is more patience, or perhaps you need to evaluate your methods. This doesn't mean you're a failure. It means you've discovered a method that doesn't work.



Eight of Coins:

Two rings swim in a colorful concoction of creative energy. Their interiors are not fully formed, more so resembling portals peering into a creation in process. To the right are six completed tokens, arranged neatly in a row. The Eight of Coins is the card of skill-building, talent, and experience. You're working toward something fantastic. But it's not all about the end goal. You can derive a lot of pleasure and fulfillment from the learning process. Enjoy the feeling of self-improvement. This will make the finished product look even brighter.

Reversed:

Sometimes when we work on something, it doesn't feel like we're getting better. The Eight of Coins reversed can indicate that progress is unbearably slow, and it might not get easier anytime soon. Get used to that feeling, because you'll have to endure the drudgery of practice before you get anywhere near mastery.

Nine of Coins:

Nine refined rainbow tokens burgeon like plump fruits in a pool of milky hues. The Nine of Coins is a sign of plenty. Stand back and admire all the delightful things that surround you. Much of life is work and discipline, but the best reasons to live are in the simpler joys of comfort, friendship, and art. This is a card of self-sufficient prosperity. You've acquired many riches and you did it on your own.

Reversed:

Reversed, the Nine of Coins suggests you are not financially independent. It would be nice to work toward self-reliance, but right now you can't make it on your own. Maybe you're relying on loved ones for help, or even sapping the energy of others to get by. It's okay to ask for aid, but don't abuse these favors.



Ten of Coins:

A rainbow-painted coin sits firmly in the center of a picaresque castle scene. It gently exhales a wave of undulating magic while vegetation grows freely up the wall. In the background, a serene skyline of a city is silhouetted by a blue sky. The Ten of Coins is the pinnacle of comfort and security. You are surrounded by everything you love and everything you could possibly want. And this isn't temporary happiness or financial well-being, this is about settling into a state of permanent contentment. If you haven't achieved it yet, you will someday soon. Sit back and spend time with your family. Watch the colors of the seasons change.

Reversed:

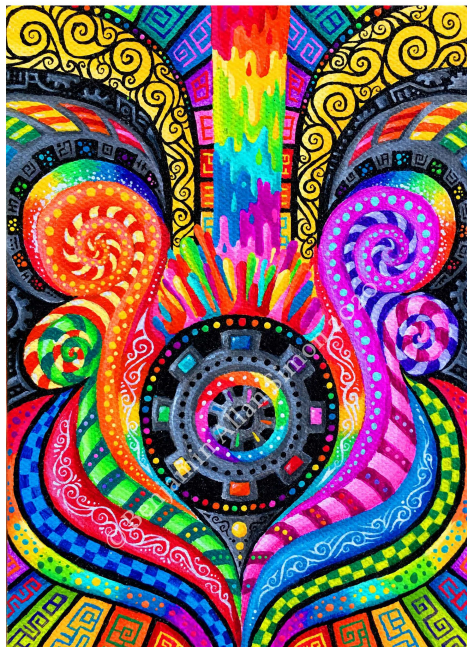
So maybe you have all the riches you wanted, but is it really fulfilling? Is this truly the life you want or do you still crave more? And where does that hunger come from? Did it turn out that family and luxury isn't something that satisfies you? Don't abandon the pleasures you have in search of something else, but do take time to consider what you truly value in life.

Page of Coins:

A shiny token is surrounded by all manner of light and color, almost as if attention is being directed to the coin. The Page of Coins represents the start of ambitious plans and the hopes of manifesting riches. It reflects that first moment of excitement at the prospect of building a life, earning responsibility, and refining skills. But realistically, financial gain is much more challenging, which is why the Page of Coins also suggests naivety. You will have to work for your earnings, and this may involve years of servitude.

Reversed:

The thought of gaining wealth is alluring, but achieving it is an entirely different issue. The Page of Coins reversed represents those moments of laziness or unwillingness to do what it takes to get the job done. It would certainly be nice to have things handed to you, but sooner or later, you're going to have to commit to responsibilities.



Knight of Coins:

In place of a token there is a sturdy mechanical cog, forcing its way through all manner of obstacles, carving a path to its goal. The gear is being supplied with a steady flow of fuel from above. The Knight of Coins signifies a desire for status and success through commitment and consistent productivity. Where others may be charged by ambition and eager to act fast, this card is a symbol of those who believe in the value of clocking in every morning and getting the job done right, no matter how long it takes. No masterpiece is made on impulse. Paint your colors with patience.

Reversed:

The reverse of this card signifies the exact opposite of the Knight of Coins' dedication. This could represent a person in your life who is consistently idle, self-serving, and eager to take the easy way out. Like the Knight, serve as a positive example of what reliability can accomplish.

Queen of Coins:

An organic token made of flower petals serves as the central life force to a multitude of other greenery. The Queen of Coins is the stable provider for those in need. The card represents a financially savvy figure in your life who spreads her wisdom and affections to those she loves and offers what resources she can to those in need. However, with an appreciation of wealth comes some hedonistic leanings. Don't become too absorbed in the pleasures that money can buy.

Reversed:

The Queen of Coins reversed is entirely selfish, driven not by a nurturing instinct, but by a need to satisfy the self. This could represent someone you know who is contemptuous, envious, and always looking to obtain what others have. Be cautious of these people or, more importantly, be wary of these traits in yourself.



King of Coins:

A gigantic multicolored coin sits in a metallic slot, seemingly activating a whirring machine. A steadfast bull peers out from the base with an all-knowing gaze. The King of Coins is an exemplary figure of setting realistic goals and accomplishing them one step at a time. A pragmatic and rational person above all else, King of Coins represents someone you can rely on for protection, advice, and tact. Whether a provider or a boss, trust this person to point you toward prosperity. If you have no one like this, look within yourself to find the business savvy leader waiting to come out.

Reversed:

Like many of the reversed Coins, the King of Coins inverted signifies greed and desperation for empty accolades. This could indicate someone you know who is opportunist, chauvinistic, and maybe even gluttonous. A cautionary tale of what happens when too many of the world's pleasantries are hoarded.